

Turners Gardens, Northampton, NN4 6LZ



£975

Spacious and well-presented two bedroom apartment on the outskirts of Wootton Village with allocated private parking and within a short drive into Northampton town centre, easy access to A45, M1 North and South & Northampton train station with direct links to Birmingham & London Euston.

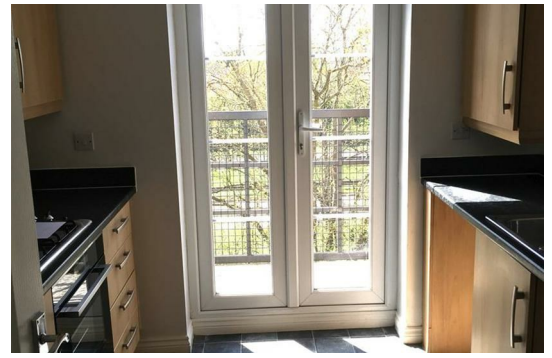
The property is located on the first floor and benefits from a well-presented kitchen with oven, hob and extractor plus UPVC doors leading out onto an external balcony. One double & one single bedroom, spacious lounge & modern bathroom with shower over the bath. The property benefits from UPVC double glazing, Gas central heating & is presented in a clean and well-maintained condition. EPC rating is C and council tax band is B.

In order to apply for the property applicants must have a good credit score/no CCJS/ Bankruptcy/IVA. Income must be in excess of £30,000 per year to pass affordability checks (this can be combined between applicants)

Available end of April
Rent £975.00
Deposit 1,125.00
Weeks rent to secure the property £225.00

Please note we are advertising on behalf of an independent landlord and all enquires will be forwarded onto them.

Turners Gardens, Northampton NN4 6LZ



Energy Efficiency Rating		Current	Potential
Very energy efficient - lower running costs			
(92 plus) A			
(81-91) B			
(69-80) C			
(55-68) D			
(39-54) E			
(21-38) F			
(1-20) G			
Not energy efficient - higher running costs			
England & Wales		EU Directive 2002/91/EC	

Environmental Impact (CO ₂) Rating		Current	Potential
Very environmentally friendly - lower CO ₂ emissions			
(92 plus) A			
(81-91) B			
(69-80) C			
(55-68) D			
(39-54) E			
(21-38) F			
(1-20) G			
Not environmentally friendly - higher CO ₂ emissions			
England & Wales		EU Directive 2002/91/EC	

These details are for guidance only and complete accuracy cannot be guaranteed. If there is any point, which is of particular importance, verification should be obtained. They do not constitute a contract or part of a contract. All measurements are approximate. No guarantee can be given with regard to planning permissions or fitness for purpose. No apparatus, equipment, fixture or fitting has been tested. Items shown in photographs are NOT necessarily included. Interested Parties are advised to check availability and make an appointment to view before travelling to see a property.